

EVIATH

BOILERS

PRODUCT CATALOG

Table of contents

COMPANY PROFILE

About us	Page 1
Our philosophy	Page 2

PRODUCTS

Solar Water Heater Double Energy	Pages 3-6
Solar Water Heater Triple Energy	Pages 7-10
Solar Water Heater Heat Pump	Pages 11-13
Integrated Solar Water Heater System	Pages 14-25

EVIATH BOILERS



OEM Solar Water Heater Manufacturer
Thessaloniki, Greece
Postal Code: 54 500
Telephone: 2310 787 976
Email: info@eviathboilers.com

About us

Since 1976 we are one of the main manufacturers of solar water heaters in Greece and we work along with the largest companies in the field. We are based in the rural area of Neochorouda in Thessaloniki, in our privately owned facilities since 2003.

We are a family business. We focus on customer service, the development of strong and long-term relationships with our partners, & the quality of our products and services.

Why EVIATH?

- We have the experience as well as the know-how.
- We are focused on quality. We pay our indivisible attention to every boiler we produce.
- We support you. From the moment we receive your order, we remain close to you to serve your every need.
- We are flexible. We take special orders and adapt our methods to implement them.
- We have the power. In addition to our efficient and up-to-date machines, our team continues to grow and improve the production methods

Our philosophy and mission

Our philosophy is inextricably linked to the concept of quality and has been integrated into the way our executives think and work. Our immediate goal is to increase our sales and partnerships both domestically and abroad. Finally, we are committed to an ongoing review of the quality management system as well as the evaluation and review of our policy, always giving priority to our customer satisfaction.

SOLAR WATER HEATER DOUBLE ENERGY GLASS



Available sizes: 120L, 150L, 200L, 250L, 300L

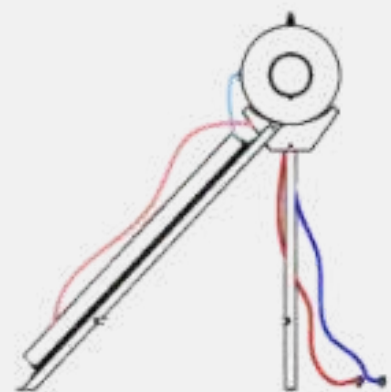
Coloring: Gray & stainless steel.

Possibility of choosing an open or closed circuit.



At EVIATH if something characterizes us is our constant will for improvement. Over time we managed to create boilers with the best possible quality at an affordable price. EVIATH GLASS solar water heaters are designed to withstand and perform excellently even in bad weather conditions

All the parts of the boiler as well as the fittings that it bears are made of a specially processed type of steel, while they are processed according to the appropriate practices. Due to the coil inside the boiler, there is the possibility for connection to the central heating system. The tanks are made entirely in Greece and always in accordance with the European ones.



TANK TECHNICAL SPECIFICATIONS

- **Inner Tank Material:** DC sheet in the container
- **Internal Corrosion Protection:** Liquid Enamel
- **Welding:** MAG.
- **Insulation:** Hard polyurethane 48kg / m³, environmentally friendly.
- **Maximum Operating Pressure for the Main Tank:** 10 bar.
- **Test Pressure for the main tank:** 15 bar.
- **Jacket Test Pressure:** 5 bar.
- **Maximum Jacket Working Pressure:** 3.2 bar
- **Electrical Resistance (If the customer wishes):** Copper
- **Resistance power:** 4 kW. Possibility to modify the strength of the resistor according to special order.
- **Exterior Cover:** 0.5mm galvanized sheet metal with special anti-corrosion protection in aluminum and stainless steel (INOX).

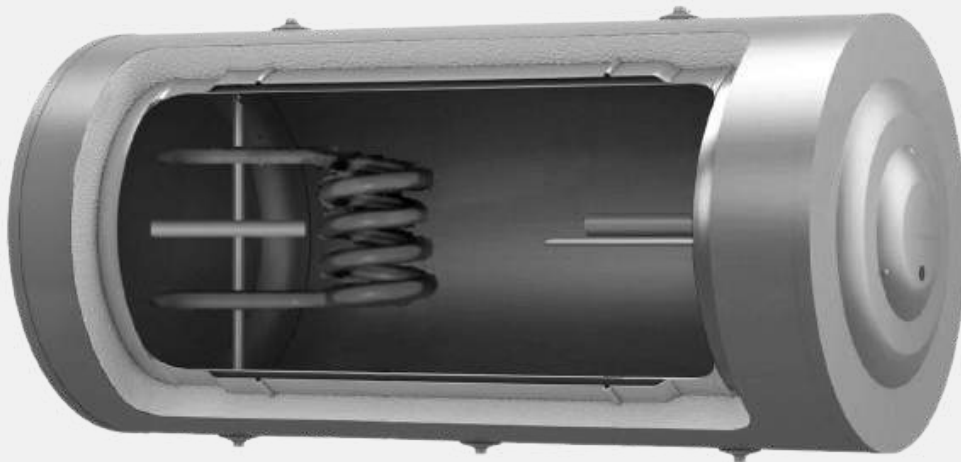
CLOSED CIRCUIT

BOILER	120L	150L	200L	250L	300L
Tank Capacity (lt)	103	128	200	230	301
Main Tank Length (mm)	1000	1250	1250	1500	1800
Inner Tank Diameter (mm)	400	400	480	480	480
External Cover Diameter (mm)	500	500	580	580	580
Jacket Capacity (lt)	6	8	9	11	15
Flange Diameter (mm)	140	140	140	140	140
Weight (kg)	48.5	62	70	79	102
Maximum Inner Tank Operating Temperature (C°)	95	95	95	95	95

OPEN CIRCUIT

BOILER	120L	150L	200L	250L	300L
Tank Capacity (lt)	103	128	200	230	301
Main Tank Length (mm)	1000	1250	1250	1500	1800
Inner Tank Diameter (mm)	400	400	480	480	480
External Cover Diameter (mm)	500	500	580	580	580
Flange Diameter (mm)	140	140	140	140	140
Weight (kg)	48.5	62	70	79	102
Maximum Inner Tank Operating Temperature (C°)	95	95	95	95	95

SOLAR WATER HEATER TRIPLE ENERGY GLASS



Available sizes: 120L, 150L, 200L, 250L, 300L

Coloring: Gray & stainless steel.

Possibility of choosing an open or closed circuit.



TANK TECHNICAL SPECIFICATIONS

- **Inner Tank Material:** DC sheet in the container
- **Internal Corrosion Protection:** Liquid Enamel
- **Welding:** MAG.
- **Insulation:** Hard polyurethane 48kg / m³, environmentally friendly.
- **Maximum Operating Pressure for the Main Tank:** 10 bar.
- **Test Pressure for the main tank:** 15 bar.
- **Jacket Test Pressure:** 5 bar.
- **Maximum Jacket Working Pressure:** 3.2 bar
- **Electrical Resistance (If the customer wishes):** Copper
- **Resistance power:** 4 kW. Possibility to modify the strength of the resistor according to special order.
- **Exterior Cover:** 0.5mm galvanized sheet metal with special anti-corrosion protection in aluminum and stainless steel (INOX).

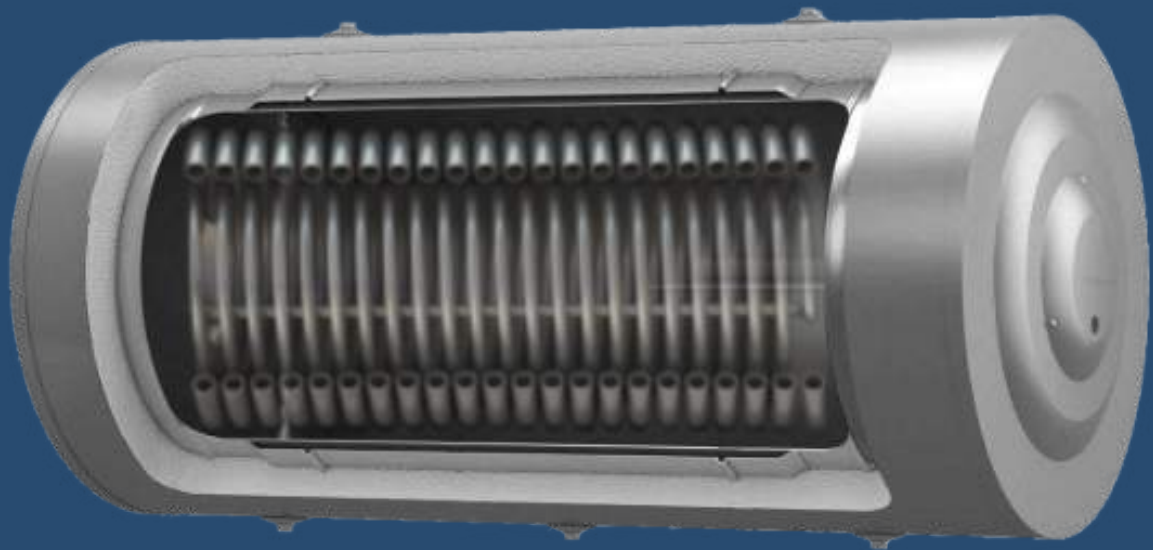
CLOSED CIRCUIT

BOILER	120L	150L	200L	250L	300L
Tank Capacity (lt)	103	128	200	230	301
Main Tank Length (mm)	1000	1250	1250	1500	1800
Inner Tank Diameter (mm)	400	400	480	480	480
External Cover Diameter (mm)	500	500	580	580	580
Jacket Capacity (lt)	6	8	9	11	15
Flange Diameter (mm)	140	140	140	140	140
Weight (kg)	48.5	62	70	79	102
Maximum Inner Tank Operating Temperature (C°)	95	95	95	95	95

OPEN CIRCUIT

BOILER	120L	150L	200L	250L	300L
Tank Capacity (lt)	104	128	200	230	301
Main Tank Length (mm)	1000	1250	1250	1500	1800
Inner Tank Diameter (mm)	400	400	480	480	480
External Cover Diameter (mm)	500	500	580	580	580
Flange Diameter (mm)	140	140	140	140	140
Weight (kg)	48.5	62	70	79	102
Maximum Inner Tank Operating Temperature (C°)	95	95	95	95	95

SOLAR WATER HEATER HEAT PUMP



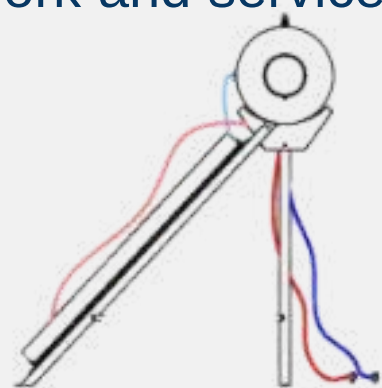
Available sizes: 150L, 200L, 300L

Coloring: Gray & stainless steel



Always having in mind the complete coverage of the needs of our customers, we created the water heater container for heat pumps. In this container, we use large heat exchangers (large surface coil). This special design is required due to the lower operating temperature of the heat pumps (55 ~ 60C) compared to the boilers (80 C) so that it is possible to exchange energy even at these low temperatures.

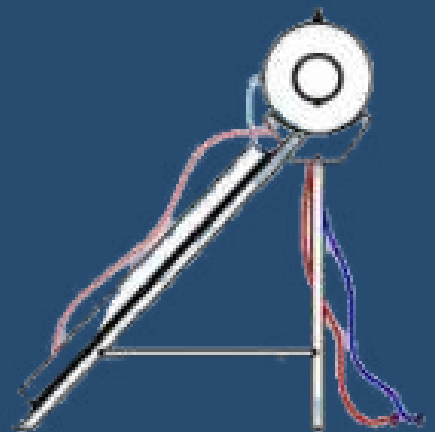
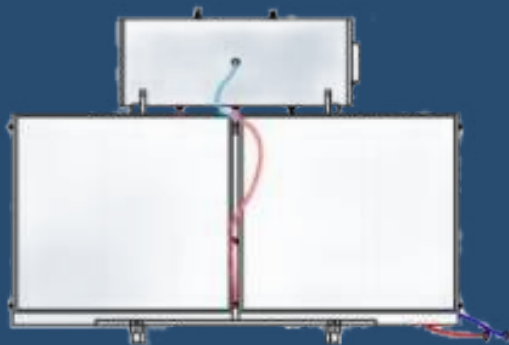
The exchanger is made of a 2mm thick DC pipe and is enameled while its large cross-section helps to maximize the efficiency of the heat pump. It is also possible to add an electrical resistor for an additional power source. Due to this design, the tank works without problems, unlike simple tanks with additional heat exchangers where they may have some defects. As the tank is designed to meet the requirements of the heat exchanger, we have made sure that the flange remains available for work and service if and when they are needed.



TANK TECHNICAL SPECIFICATIONS

- **Inner Tank Material:** DC sheet in the container
- **Internal Corrosion Protection:** Liquid Enamel
- **Welding:** MAG.
- **Insulation:** Hard polyurethane 48kg / m³, environmentally friendly.
- **Maximum Operating Pressure for the Main Tank:** 10 bar.
- **Test Pressure for the main tank:** 15 bar.
- **Jacket Test Pressure:** 5 bar.
- **Maximum Jacket Working Pressure:** 3.2 bar
- **Electrical Resistance (If the customer wishes):** Copper
- **Resistance power:** 4 kW. Possibility to modify the strength of the resistor according to a special order.
- **Exterior Cover:** 0.5mm galvanized sheet metal with special anti-corrosion protection in aluminum and stainless steel (INOX).

BOILER	150L	200L	300L
Tank Capacity (lt)	128	200	301
Main Tank Length (mm)	1250	1250	1800
Inner Tank Diameter (mm)	400	480	480
External Cover Diameter (mm)	500	580	580
Jacket Capacity (lt)	8	9.5	16
Flange Diameter (mm)	140	140	140
Weight (kg)	62	70	102
Maximum Inner Tank Operating Temperature (C°)	95	95	95



INTEGRATED SOLAR WATER SYSTEM GLASS



Available sizes: 120L, 150L, 200L, 250L, 300L

Coloring: Gray & stainless steel

Possibility of choosing an open or closed circuit.



Tank Technical Specifications

- **Inner Tank Material:** DC sheet in the container
- **Internal Corrosion Protection:** Liquid Enamel
- **Welding:** MAG.
- **Insulation:** Hard polyurethane 48kg / m³, environmentally friendly.
- **Maximum Operating Pressure for the Main Tank:** 10 bar.
- **Test Pressure for the main tank:** 15 bar.
- **Jacket Test Pressure:** 5 bar.
- **Maximum Jacket Working Pressure:** 3.2 bar
- **Electrical Resistance (If the customer wishes):**
Copper
- **Resistance power:** 4 kW. Possibility to modify the strength of the resistor according to a special order.
- **Exterior Cover:** 0.5mm galvanized sheet metal with special anti-corrosion protection in aluminum and stainless steel (INOX).

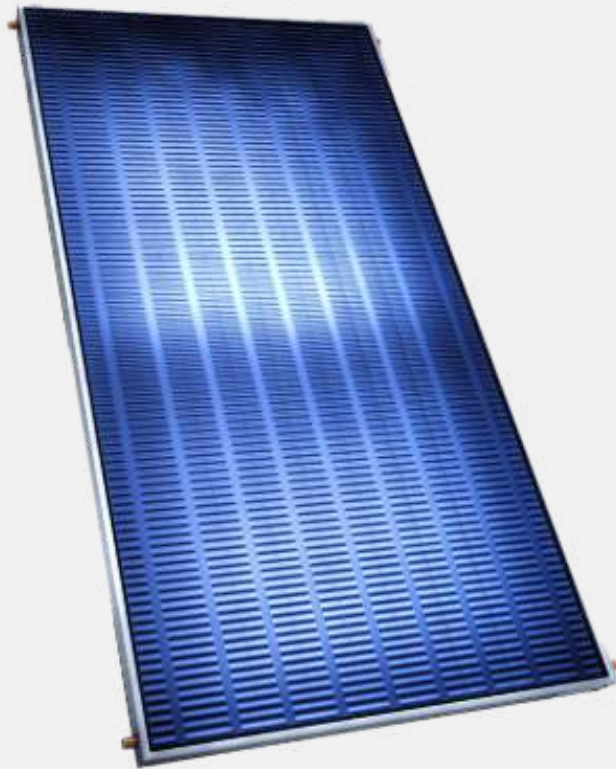
CLOSED CIRCUIT

BOILER	120L	150L	200L	250L	300L
Tank Capacity (lt)	103	128	200	230	301
Main Tank Length (mm)	1000	1250	1250	1500	1800
Inner Tank Diameter (mm)	400	400	480	480	480
External Cover Diameter (mm)	500	500	580	580	580
Jacket Capacity (lt)	6	8	9	11	15
Flange Diameter (mm)	140	140	140	140	140
Weight (kg)	48.5	62	70	79	102
Maximum Inner Tank Operating Temperature (C°)	95	95	95	95	95

OPEN CIRCUIT

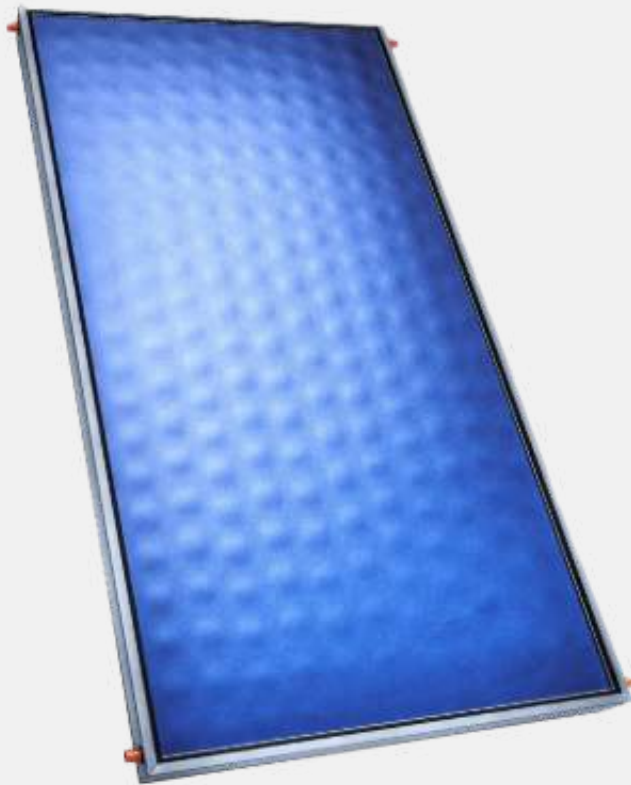
BOILER	120L	150L	200L	250L	300L
Tank Capacity (lt)	103	128	200	230	301
Main Tank Length (mm)	1000	1250	1250	1500	1800
Inner Tank Diameter (mm)	400	400	480	480	480
External Cover Diameter (mm)	500	500	580	580	580
Flange Diameter (mm)	140	140	140	140	140
Weight (kg)	48.5	62	70	79	102
Maximum Inner Tank Operating Temperature (C°)	95	95	95	95	95

COLLECTORS



**There are 3 types of collectors available:
Sol, Energy & Navi.**

SOL COLLECTOR PLUS SERIES



Manufactured with high-performance excellence.

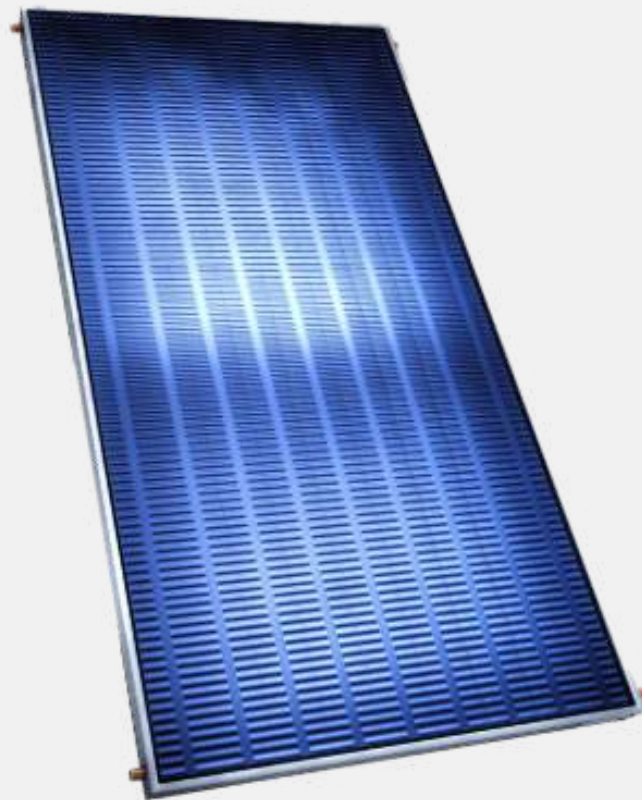
A collector's series, designed to meet the cold continental climate and the conditions of reduced solar radiation, responding to its energy needs in the most extreme weather conditions.

ENERGY+SOL: Absorptive aluminium surface with blue selective PVD coating technology. : ø 8mm Risers

- 8 available sizes ranging from 1.5 m² to 2.9 m².
- Global installation system with internal movable parts.
- Lightweight for easy transport and installation.
- One-piece anodized profile, anti-corrosion technology for ultimate sealing against moisture and air micro-particles.
- Safety glass with high permeability
- Back and Side rock-wool insulation .
- HARP type absorber (headers and risers) welded with LASER technology
- x4 stainless hidden vents.
- Vertical or horizontal mounting possibility
- x2 or x4 outlets Cu ø22

Technical Data	SOL+				
Type	SI	20	23	25	29
Overall Area	m ²	2.02	2.24	2.52	2.92
Absorber Area	m ²	1.83	2.03	2.33	2.71
Length	mm	2006	1893	2006	2006
Width	mm	103	103	103	103
Height	mm	1007	1183	1257	1457
Weight (Dry)	Kg	33	37	41	46
Absorber Volume Capacity	L	1.6	1.8	1.9	2.1

ENERGY COLLECTOR PLUS SERIES



High aesthetics and functionality are the main characteristics of the solar collector series ENERGY+. We are committed in innovative design and functionality presenting the advantages of the collector series designed for the Mediterranean-type climate.

- **ENERGY+EVO:** Absorptive aluminium surface with blue selective PVD coating technology. • ø8mm Risers.
 - **ENERGY+ECO:** Absorptive aluminium surface with black selective coating. • ø8mm Risers.
 - **ENERGY+ARGO:** Absorptive aluminium surface with blue selective PVD coating technology • ø15mm Risers.
-
- 8 available sizes ranging from 1.5 m² to 2.9 m².
 - Global installation system with internal movable parts
 - Lightweight for easy transport and installation.
 - One-piece anodized profile, anti-corrosion technology for ultimate sealing against moisture and air micro-particles.
 - Safety glass with high permeability.
 - Back and side mineral-wool insulation.
 - HARP type absorber (headers and risers) welded with laser technology
 - x2 stainless vents positioned at the bottom.
 - Vertical or horizontal mounting possibility
 - x2 or x4 outlets Cu ø22.

ENERGY & EVO

Technical Data	ENERGY + EVO								
Type	SI	15	17	19	20	23	25	27	29
Overall Area	m ²	1.51	1.68	1.96	2.02	2.24	2.52	2.66	2.92
Absorber Area	m ²	1.35	1.51	1.79	1.83	2.03	2.33	2.43	2.71
Length	mm	1503	1420	1503	2006	1803	2006	2261	2006
Height	mm	85	85	85	85	85	85	85	85
Width	mm	1007	1183	1305	1007	1183	1257	1183	1457
Weight (Dry)	Kg	23	25	30	30	34	38	40	42
Absorber Volume Capacity	L	1.17	1.32	1.52	1.33	1.53	1.69	1.75	1.95

ENERGY & ARGO

Technical Data	ENERGY + ARGO								
Type	SI	15	17	19	20	23	25	27	29
Overall Area	m ²	1.51	1.68	1.96	2.02	2.24	2.52	2.66	2.92
Absorber Area	m ²	1.35	1.51	1.79	1.83	2.03	2.33	2.43	2.71
Length	mm	1503	1420	1503	2006	1803	2006	2261	2006
Height	mm	85	85	85	85	85	85	85	85
Width	mm	1007	1183	1305	1007	1183	1257	1183	1457
Weight (Dry)	Kg	24	26	31	32	36	40	42	44
Absorber Volume Capacity	L	2.4	2.7	3	3	3.4	4	4.5	5

NAVI COLLECTOR PLUS SERIES



Advanced engineering combined with high aesthetics, offers a maximum performance, reliability and attractive design. The series of solar panels NAVI+ excel for their extreme mechanical and thermal strength, while offering absolute waterproofing and eliminating any heat loss due to the homogeneous construction, upgrading the product to No1 in the world rankings.

EVIATH BOILERS

- **NAVI+ 15: Absorptive aluminium surface with blue selective PVD coating technology. • ø8mm Risers**
 - **NAVI+ 20: Absorptive aluminium surface with blue elective PVD coating technology. • ø8mm Risers**
 - **NAVI+ 25: Absorptive aluminium surface with blue selective PVD coating technology. • ø8mm Risers**
-
- 3 available sizes ranging from 1.5 m² to 2.5 m².
 - Installation system with internal, stable thread.
 - Lightweight for easy transport and installation.
 - One-piece tray, anti-corrosion technology for ultimate sealing against moisture and air micro-particles.
 - Safety glass with high permeability.
 - Back rock-wool insulation.
 - HARP type absorber (headers and risers) welded with LASER technology.
 - x2 vents positioned at the bottom.
 - Vertical or horizontal mounting possibility.
 - x2 or x4 outlets Cu ø 22.

Technical Data	NAVI+			
Type	SI	15	20	25
Overall Area	m2	1.55	2.05	2.52
Absorber Area	m2	1.36	1.83	2.28
Length	mm	1531	2031	2031
Height	mm	95	95	95
Width	mm	1011	1011	1241
Weight (Dry)	Kg	27	34	39
Absorber Volume Capacity	L	1.3	1.6	1.9

EVIATH

BOILERS

