

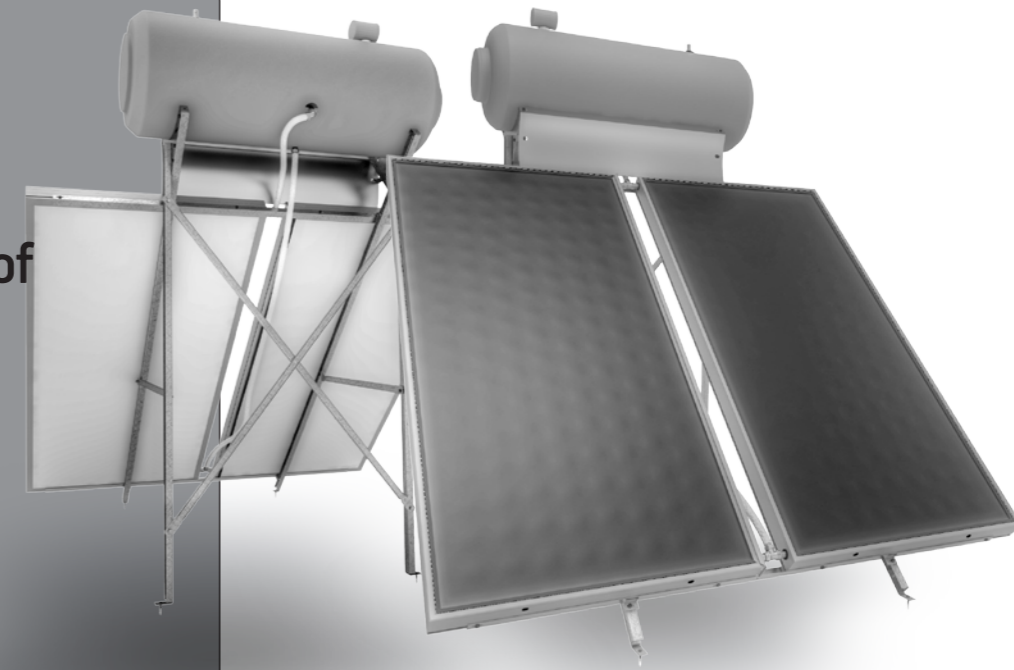
- A. First screw the studs on the movable metallic nuts on the lower side of the collector then apply the collector on the support structure and tight with washers and nuts.
- B. First check that the front part of the solar system looks to the South and then pierce the floor.
- C. In case the collector has extra outlets, then you have to tap them, according to step 16.
- D. Check that you fulfill the closed circuit of the solar system with water and antifreeze liquid according to the instructions indicated on the label of antifreeze liquid and then screw the expansion tank EMPTY and the pressure relief valve with use of teflon insulation.
- E. Check before leaving the installation site that all bolts are properly tightened and all piping are properly connected without leaking.

**F. ATTENTION!** The connection of the backup heating element must be done by experienced personnel.

# Technical Manual

For the installation of a solar system

with 2x vertical collectors connected in the center



- |  |   |  |   |
|--|---|--|---|
| <p><b>1</b></p> <p>Mounting structures x2</p>        | <p><b>2</b></p> <p>Shield x1</p>                  | <p><b>3</b></p> <p>Brass reinforcement x8</p>              | <p><b>4</b></p> <p>Shield angle connectors x2</p> |
| <p><b>5</b></p> <p>Steel Nut M8 x27</p>              | <p><b>6</b></p> <p>Steel screw M8x12 x19</p>      | <p><b>7</b></p> <p>Plastic expansion D10 x4</p>            | <p><b>8</b></p> <p>Hanger bolts x4</p>            |
| <p><b>9</b></p> <p>Short inox hose x1</p>            | <p><b>10</b></p> <p>Steel Washer M8X24 x2</p>     | <p><b>11</b></p> <p>Brass elbow 3/4" x1</p>                | <p><b>12</b></p> <p>Long inox hose x1</p>         |
| <p><b>13</b></p> <p>Non-return pressure valve x1</p> | <p><b>14</b></p> <p>Stud M8X20 x8</p>             | <p><b>15</b></p> <p>Expansion tank x1</p>                  | <p><b>16</b></p> <p>Pressure relief valve x1</p>  |
| <p><b>17</b></p> <p>Brass T with O-rings x2</p>      | <p><b>18</b></p> <p>Rubber Gasket x4</p>          | <p><b>19</b></p> <p>Support beams for 2x collectors x2</p> | <p><b>20</b></p> <p>Steel washer M8X16 x8</p>     |
| <p><b>21</b></p> <p>Anti-freeze liquid x1</p>        | <p><b>22</b></p> <p>Brass plug with O-ring x4</p> | <p><b>23</b></p> <p>Mounting X x2</p>                      |   |

**1 Step**

**!**  
example  
2 x 6  
2 items from object 6

2x6  
2x5

**2 Step**

**!**

THIS SIDE OUT

2x5  
2x6

**3 Step**

4x5  
4x6  
2x19

**4 Step**

1x5  
1x6  
2x23

**5 Step**

4x5  
4x6

**6 Step**

THIS SIDE DOWN

**!**

**7 Step**

**!** ATTENTION!  
See note A

4x14  
4x5  
4x20

**8 Step**

**!** Move and place the mounting structures in the correct orientation and then align and center the collectors on the structures.

X X

**9 Step**

4x14  
4x5  
4x20

**10 Step**

4x7  
4x8

**11 Step**

2x4  
2x5  
2x6

**12 Step**

2x5  
2x6  
2x10  
1x2

**13 Step**

Press the center of the shield in order to curvature it like in step 14

**!**

**14 Step**

2x5  
2x6

**15 Step**

Inlet of hot liquid from collector  
Outlet of hot water for use  
Backup heating element  
Inlet of cold water from water network  
Outlet of cold liquid to collector